

USCAN[®]

Total Security[®]



Hardware Catalog



DOOR HARDWARE*Page 1-20,23*

Clutched Cylindrical Leverset: Grade 1 - USL 100 Series	1
Clutched Cylindrical Leverset: Grade 1 - USL 100 Series IC-Core	1
Leverset Replacement Latches: Grade 1	2
Clutched Cylindrical Leverset: Grade 2 - USL 200 Series-Clutched	2
Fixed Cylindrical Leverset: Grade 2 - USL 200 Series-Fixed	3
Clutched Cylindrical Leverset: Grade 2 - USL 200 Series IC-Core	3
Cylindrical Lockset: Grade 1 - K100 Series	4
Cylindrical Lockset: Grade 1 - K100 Series IC-Core	5
Lockset Replacement Latches: Grade 1	5
Cylindrical Lockset: Grade 2 - US Series (WR5 Keyway)	6
Cylindrical Lockset: Grade 2 - US Series (SCI Keyway)	7
Cylindrical Lockset: Grade 2 - US Series	8
Cylindrical Lockset: Grade 2 - US Series IC-Core	9
Leverset and Lockset Replacement Parts: Grade 2	10
Tubular Lockset: Grade 3 - US 100 Series	10
Tubular Lockset Replacement Parts: Grade 3	10
Cylindrical Lockset: Grade 3 - K300 Series	11
Cylindrical Lockset Replacement Parts: Grade 3	12
Deadbolt: Grade 2 - D120 & D220 Series	12
Deadbolt: Grade 2 - D120 & D220 Series IC-Core	13
Deadbolt Replacement Latches: Grade 2	13
Deadbolt Removeable Cylinder: Grade 2 - D130 & D230 Series	14
Deadbolt Removeable Cylinder: Grade 2 - D130 & D230 Series IC-Core	14
Deadbolt Replacement Latches: Grade 2	15
Deadbolt Removeable Cylinder: Grade 3 - D125 & D225 Series	15
Deadbolt: Grade 3 - D108 & D208 Series	16
Deadbolt Replacement Latch: Grade 3	16
Deadbolt Replacement Parts: Grade 2 & 3	17
Deadbolt Screw Pack: Grade 2	17
Rim Mount Panic Exit Device - UC-PB Series	18
Panic Exit Device Trim - UC Series	18
Grade 1 Exit Device	19
Panic Exit Device Trim: UC-2100 Series	19
Door Closer: Grade 1 - 3000 Series	20
Door Closer: Grade 1 - 2000 Series	20
Door Closer: Grade 3 - 1000 Series	20
Electro Magnetic Lock - UC-ML Series	23
Solid Brass Door Viewers - UC Series	23

STORE FRONT HARDWARE*Page 21-22*

Narrow Stile Aluminum Door Deadlatch Lock - UC-DL4510 Series	21
Narrow Stile Aluminum Door Deadbolt Lock - UC-DB2850 Series	21
Narrow Stile Aluminum Door Hook Bolt Lock - UC-HB3820 Series	21
Narrow Stile Aluminum Door Deadlatch Paddle - UC-P5500 Series	22
Narrow Stile Aluminum Door Deadlatch Handle - UC-P5500 Series	22
Narrow Stile Aluminum Door Parts - UC Series	22

SECURITY HARDWARE PRODUCTS*Page 24-25*

Stainless Steel Round Padlock - R70 Series	24
Solid Brass Rekeyable Padlock - 90/91 Series	24
Laminated Steel Padlock - L Series	25

CLUTCHED CYLINDRICAL LEVERSET Grade I - USL 100 Series



- Heavy duty cylindrical "Clutched" Grade I leverset.
- Removable outer thru-bolting.
- Adjustable door thickness.
- Interior push and turn button.
- Accepts most manufacturers aftermarket cylinders.
- SCI keyway.
- Keyed Different.
- 2-3/4" UL listed latchbolt.
- ANSI strike.
- Designed to install with ease.



PART#	MFG#	BACKSET	FUNCTION	KEYWAY	FINISH
900-559	USL110S x 626	2-3/4"	Passage	-	Satin Chrome
900-564	USL110S x 613	2-3/4"	Passage	-	Dark Bronze
900-558	USL140S x 626	2-3/4"	Privacy	-	Satin Chrome
900-567	USL140Sx 613	2-3/4"	Privacy	-	Dark Bronze
900-552	USL150D x 626-KD	2-3/4"	Entrance	SCI	Satin Chrome
900-635	USL150D x 613-KD	2-3/4"	Entrance	SCI	Dark Bronze
900-554	USL170D x 626-KD	2-3/4"	Classroom	SCI	Satin Chrome
900-689	USL170D x 613-KD	2-3/4"	Classroom	SCI	Dark Bronze
900-553	USL180D x 626-KD	2-3/4"	Storeroom	SCI	Satin Chrome
900-586	USL180D x 613-KD	2-3/4"	Storeroom	SCI	Dark Bronze
900-561	USL173D x 626-KD	2-3/4"	Intruder	SCI	Satin Chrome

CLUTCHED CYLINDRICAL LEVERSET Grade I - USL 100 Series IC-Core



IC-Core Cylinder not included

- Heavy duty cylindrical "Clutched" Grade I leverset.
- Removable outer thru-bolting.
- Adjustable door thickness.
- Interior push and turn button.
- Accepts most manufacturers aftermarket IC-Cores.
- IC-Core Small Format Best/Falcon Prep.
- Accepts 6 & 7 pin IC-Core cylinders.
- 2-3/4" UL listed latchbolt.
- ANSI strike.
- Designed to install with ease.



PART#	MFG#	BACKSET	FUNCTION	KEYWAY	FINISH
900-555	USL150D-IC x 626	2-3/4"	Entrance	IC-Core	Satin Chrome
974-400	USL150D-LFIC x 626	2-3/4"	Entrance	LFIC-Core	Satin Chrome
900-557	USL170D-IC x 626	2-3/4"	Classroom	IC-Core	Satin Chrome
974-404	USL170D-LFIC x 626	2-3/4"	Classroom	LFIC-Core	Satin Chrome
900-556	USL180D-IC x 626	2-3/4"	Storeroom	IC-Core	Satin Chrome
974-402	USL180D-LFIC x 626	2-3/4"	Storeroom	LFIC-Core	Satin Chrome
900-562	USL173D-IC x 626	2-3/4"	Intruder	IC-Core	Satin Chrome

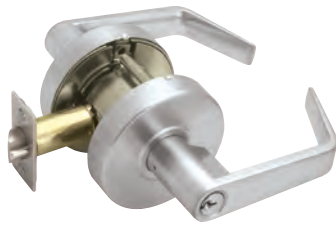
LEVERSET REPLACEMENT LATCHES *Grade 1*



PART#	MFG#	BACKSET	TYPE	FINISH
915-082	USLGI-SL-2-3/8	2-3/8"	Spring Latch	Satin Chrome
915-083	USLGI-SL-2-3/4	2-3/4"	Spring Latch	Satin Chrome
915-084	USLGI-DL-2-3/8	2-3/8"	Dead Latch	Satin Chrome
915-085	USLGI-DL-2-3/4	2-3/4"	Dead Latch	Satin Chrome

DOOR HARDWARE

CLUTCHED CYLINDRICAL LEVERSET *Grade 2 - USL 200 Series-Clutched*



- Medium duty cylindrical "Clutched" Grade 2 lever set.
- Removable outer thru-bolting.
- Adjustable door thickness.
- Interior push and turn button.
- Accepts most manufacturers aftermarket cylinders.
- SCI keyway.
- 2-3/8" and 2-3/4" UL listed latchbolt.
- ANSI strike.
- Designed to install with ease.



STORE FRONT HARDWARE

PART#	MFG#	BACKSET	FUNCTION	KEYWAY	FINISH
960-232	USL212S x 605	2-3/4"	Passage	-	Bright Brass
960-234	USL212S x 613	2-3/4"	Passage	-	Dark Bronze
960-237	USL212S x 626	2-3/8"	Passage	-	Satin Chrome
960-236	USL212S x 626	2-3/4"	Passage	-	Satin Chrome
960-224	USL242S x 605	2-3/4"	Privacy	-	Bright Brass
960-226	USL242S x 613	2-3/4"	Privacy	-	Dark Bronze
960-227	USL242S x 626	2-3/8"	Privacy	-	Satin Chrome
960-228	USL242S x 626	2-3/4"	Privacy	-	Satin Chrome
960-200	USL252D x 605-KD	2-3/4"	Entrance	SCI	Bright Brass
960-202	USL252D x 613-KD	2-3/4"	Entrance	SCI	Dark Bronze
960-205	USL252D x 626-KD	2-3/8"	Entrance	SCI	Satin Chrome
960-204	USL252D x 626-KD	2-3/4"	Entrance	SCI	Satin Chrome
960-208	USL272D x 605-KD	2-3/4"	Classroom	SCI	Bright Brass
960-210	USL272D x 613-KD	2-3/4"	Classroom	SCI	Dark Bronze
960-213	USL272D x 626-KD	2-3/8"	Classroom	SCI	Satin Chrome
960-212	USL272D x 626-KD	2-3/4"	Classroom	SCI	Satin Chrome
960-216	USL282D x 605-KD	2-3/4"	Storeroom	SCI	Bright Brass
960-218	USL282D x 613-KD	2-3/4"	Storeroom	SCI	Dark Bronze
960-221	USL282D x 626-KD	2-3/8"	Storeroom	SCI	Satin Chrome
960-222	USL282D x 625-KD	2-3/4"	Storeroom	SCI	Bright Chrome
960-220	USL282D x 626-KD	2-3/4"	Storeroom	SCI	Satin Chrome

SECURITY HARDWARE PRODUCTS

FIXED CYLINDRICAL LEVERSET

Grade 2 - USL 200 Series-Fixed



- Medium duty cylindrical "Fixed" Grade 2 lever set.
- Removable outer thru-bolting.
- Adjustable door thickness.
- Interior push and turn button.
- Accepts most manufacturers aftermarket cylinders.
- SCI keyway.
- 2-3/4" UL listed latchbolt.
- ANSI strike.
- Designed to install with ease.



PART#	MFG#	BACKSET	FUNCTION	KEYWAY	FINISH
960-270	USL250D x 626	2-3/4"	Entrance	SCI	Satin Chrome
960-271	USL250D x 605	2-3/4"	Entrance	SCI	Bright Brass
960-272	USL250D x 613	2-3/4"	Entrance	SCI	Dark Bronze
960-275	USL270D x 626	2-3/4"	Classroom	SCI	Satin Chrome
960-276	USL270D x 613	2-3/4"	Classroom	SCI	Dark Bronze
960-280	USL280D x 626	2-3/4"	Storeroom	SCI	Satin Chrome
960-281	USL280D x 613	2-3/4"	Storeroom	SCI	Dark Bronze

CLUTCHED CYLINDRICAL LEVERSET

Grade 2 - USL 200 Series IC-Core



IC-Core Cylinder not included

- Medium duty cylindrical "Clutched" Grade 2 lever set.
- Removable outer thru-bolting.
- Adjustable door thickness.
- Interior push and turn button.
- IC-Core Small Format Best/Falcon Prep that accepts most manufacturers after market IC-Core cylinders.
- Accepts 6 & 7 pin IC-Core cylinders.
- 2-3/4" UL listed latchbolt.
- ANSI strike.
- Designed to install with ease.



PART#	MFG#	BACKSET	FUNCTION	KEYWAY	FINISH
960-240	USL252D-IC x 605	2-3/4"	Entrance	IC-Core	Bright Brass
960-242	USL252D-IC x 613	2-3/4"	Entrance	IC-Core	Dark Bronze
960-244	USL252D-IC x 626	2-3/4"	Entrance	IC-Core	Satin Chrome
960-248	USL272D-IC x 605	2-3/4"	Classroom	IC-Core	Bright Brass
960-250	USL272D-IC x 613	2-3/4"	Classroom	IC-Core	Dark Bronze
960-254	USL272D-IC x 625	2-3/4"	Classroom	IC-Core	Bright Chrome
960-252	USL272D-IC x 626	2-3/4"	Classroom	IC-Core	Satin Chrome
960-256	USL282D-IC x 605	2-3/4"	Storeroom	IC-Core	Bright Brass
960-258	USL282D-IC x 613	2-3/4"	Storeroom	IC-Core	Dark Bronze
960-262	USL282D-IC x 625	2-3/4"	Storeroom	IC-Core	Bright Chrome
960-260	USL282D-IC x 626	2-3/4"	Storeroom	IC-Core	Satin Chrome

CYLINDRICAL LOCKSET

Grade I - K100 Series



- Heavy duty cylindrical grade I lockset.
- Adjustable door thickness
- Interior push and turn button.
- Orbit Knob Design.
- Accepts most manufacturers aftermarket cylinders.
- SCI keyway.
- Keyed Different.
- 2-3/4" UL listed latchbolt.
- T-strike.
- Designed to install with ease.



PART#	MFG#	BACKSET	FUNCTION	KEYWAY	FINISH
901-495	K110S x 613	2-3/4"	Passage	-	Dark Bronze
901-490	K110S x 630	2-3/4"	Passage	-	Stainless Steel
901-485	K140S x 613	2-3/4"	Privacy	-	Dark Bronze
901-480	K140S x 630	2-3/4"	Privacy	-	Stainless Steel
901-456	K150D x 605-KD	2-3/4"	Entrance	SCI	Bright Brass
901-455	K150D x 613-KD	2-3/4"	Entrance	SCI	Dark Bronze
901-450	K150D x 630-KD	2-3/4"	Entrance	SCI	Stainless Steel
901-475	K170D x 613-KD	2-3/4"	Classroom	SCI	Dark Bronze
901-470	K170D x 630-KD	2-3/4"	Classroom	SCI	Stainless Steel
901-465	K180D x 613-KD	2-3/4"	Storeroom	SCI	Dark Bronze
901-460	K180D x 630-KD	2-3/4"	Storeroom	SCI	Stainless Steel

DOOR HARDWARE

STORE FRONT HARDWARE

SECURITY HARDWARE PRODUCTS

CYLINDRICAL LOCKSET

Grade I - K100 Series IC-Core



- Heavy duty commercial grade I lockset.
- Ball design knob.
- Accepts 6 or 7 pin SFIC cores.
- U.L. listed fire rated 2-3/4" latch



PART#	MFG#	BACKSET	FUNCTION	KEYWAY	FINISH
901-454	K150-IC x 630	2-3/4"	Entry	-	Stainless Steel
901-461	K180-IC x 630	2-3/4"	Storeroom	-	Stainless Steel
901-471	K170-IC x 630	2-3/4"	Classroom	-	Stainless Steel

DOOR HARDWARE

LOCKSET REPLACEMENT LATCHES

Grade I



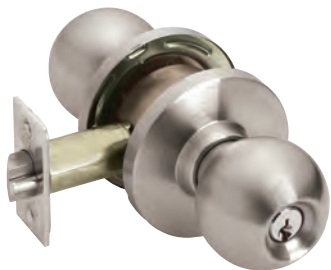
PART#	MFG#	BACKSET	TYPE	FINISH
915-063	G1-SL x 630	2-3/8"	Spring Latch	Stainless Steel
915-062	G1-SL x 630	2-3/4"	Spring Latch	Stainless Steel
974-517	2-3/8" Priv SL	2-3/8"	Spring Latch	Stainless Steel
974-518	2-3/4" Priv SL	2-3/4"	Spring Latch	Stainless Steel
915-044	G1-DL x 630	2-3/8"	Dead Latch	Stainless Steel
915-049	G1-DL x 630	2-3/4"	Dead Latch	Stainless Steel
915-070	IC-17-1	-	IC Tailpiece	-
914-194	57mm Extension	5"	-	-

STORE FRONT HARDWARE

SECURITY HARDWARE PRODUCTS

CYLINDRICAL LOCKSET

Grade 2 - US Series



- Medium duty cylindrical grade 2 lockset.
- Adjustable door thickness
- Interior push and turn button.
- Orbit Knob Design.
- Accepts most manufacturers aftermarket cylinders.
- WR5 keyway.
- Keyed Different.
- 2-3/8" and 2-3/4" UL listed latchbolt.
- T-strike.
- Designed to install with ease.



DOOR HARDWARE

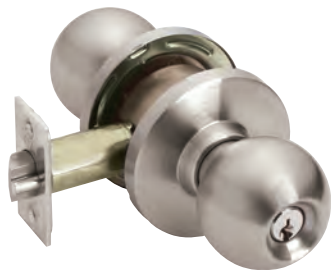
STORE FRONT HARDWARE

SECURITY HARDWARE PRODUCTS

PART#	MFG#	BACKSET	FUNCTION	KEYWAY	FINISH
951-010	US53P x 605	2-3/8"	Entrance	WR5	Bright Brass
951-000	US53P x 605	2-3/4"	Entrance	WR5	Bright Brass
951-070	US53P x 630	2-3/8"	Entrance	WR5	Stainless Steel
951-060	US53P x 630	2-3/4"	Entrance	WR5	Stainless Steel
951-030	US53P x 609	2-3/8"	Entrance	WR5	Antique Brass
951-020	US53P x 609	2-3/4"	Entrance	WR5	Antique Brass
951-032	US53P x 619	2-3/8"	Entrance	WR5	Satin Nickel
951-022	US53P x 619	2-3/4"	Entrance	WR5	Satin Nickel
951-050	US80P x 605	2-3/8"	Storeroom	WR5	Bright Brass
951-040	US80P x 605	2-3/4"	Storeroom	WR5	Bright Brass
951-090	US80P x 630	2-3/8"	Storeroom	WR5	Stainless Steel
951-080	US80P x 630	2-3/4"	Storeroom	WR5	Stainless Steel
951-042	US80P x 609	2-3/4"	Storeroom	WR5	Antique Brass
951-052	US80P x 609	2-3/8"	Storeroom	WR5	Antique Brass
951-083	US80P x 619	2-3/4"	Storeroom	WR5	Satin Nickel
951-093	US80P x 619	2-3/8"	Storeroom	WR5	Satin Nickel

CYLINDRICAL LOCKSET

Grade 2 - US Series



- Medium duty cylindrical grade 2 lockset.
- Adjustable door thickness
- Interior push and turn button.
- Orbit Knob Design.
- Accepts most manufacturers aftermarket cylinders.
- SCI keyway.
- Keyed Different.
- 2-3/8" and 2-3/4" UL listed latchbolt.
- T-strike.
- Designed to install with ease.



PART#	MFG#	BACKSET	FUNCTION	KEYWAY	FINISH
900-493	US10S x 605	2-3/4"	Passage	-	Bright Brass
900-569	US10S x 609	2-3/8"	Passage	-	Antique Brass
900-494	US10S x 613	2-3/4"	Passage	-	Dark Bronze
900-495	US10S x 630	2-3/4"	Passage	-	Stainless Steel
900-453	US10S x 630	2-3/8"	Passage	-	Stainless Steel
974-535	US10S x 619	2-3/8"	Passage	-	Satin Nickel
900-498	US40S x 605	2-3/4"	Privacy	-	Bright Brass
900-572	US40S x 609	2-3/8"	Privacy	-	Antique Brass
900-517	US40S x 613	2-3/4"	Privacy	-	Dark Bronze
900-497	US40S x 630	2-3/4"	Privacy	-	Stainless Steel
974-530	US40S x 619	2-3/8"	Privacy	-	Satin Nickel
900-501	US53P x 605-KD	2-3/4"	Entrance	SCI	Bright Brass
900-500	US53P x 605-KD	2-3/8"	Entrance	SCI	Bright Brass
900-574	US53P x 609-KD	2-3/8"	Entrance	SCI	Antique Brass
900-504	US53P x 613-KD	2-3/4"	Entrance	SCI	Dark Bronze
900-506	US53P x 630-KD	2-3/4"	Entrance	SCI	Stainless Steel
900-505	US53P x 630-KD	2-3/8"	Entrance	SCI	Stainless Steel
974-520	US53P x 619	2-3/8"	Entrance	SCI	Satin Nickel
974-525	US53P x 619	2-3/4"	Entrance	SCI	Satin Nickel
900-510	US70P x 630-KD	2-3/4"	Classroom	SCI	Stainless Steel
900-560	US80P x 605-KD	2-3/4"	Storeroom	SCI	Bright Brass
900-512	US80P x 613-KD	2-3/4"	Storeroom	SCI	Dark Bronze
900-511	US80P x 630-KD	2-3/4"	Storeroom	SCI	Stainless Steel
900-514	US80P x 630-KD	2-3/8"	Storeroom	SCI	Stainless Steel

DOOR HARDWARE

STORE FRONT HARDWARE

SECURITY HARDWARE PRODUCTS

CYLINDRICAL LOCKSET

Grade 2 - US Series



- Heavy duty residential, medium duty commercial lockset.
- Plymouth style knob design.
- SC-1 Keyway 6-Pin.
- Accepts most manufacturers aftermarket cylinders.
- U.L. listed 2-3/8" and 2-3/4" latch.



PART#	MFG#	FUNCTION	BACKSET	KEYWAY	FINISH
900-701	US10S x 630	Passage	2-3/4"	-	Stainless Steel
900-698	US10S x 630	Passage	2-3/8"	-	Stainless Steel
900-700	US10S x 605	Passage	2-3/4"	-	Bright Brass
900-749	US40S x 630	Privacy	2-3/4"	-	Stainless Steel
900-748	US40S x 605	Privacy	2-3/4"	-	Bright Brass
900-537	US53P x 630	Entry	2-3/8"	SCI	Stainless Steel
900-799	US53P x 630	Entry	2-3/4"	SCI	Stainless Steel
900-521	US53P x 605	Entry	2-3/8"	SCI	Bright Brass
900-795	US53P x 605	Entry	2-3/4"	SCI	Bright Brass
900-802	US70P x 630	Classroom	2-3/4"	SCI	Stainless Steel
900-803	US70P x 605	Classroom	2-3/4"	SCI	Bright Brass
900-805	US80P x 630	Storeroom	2-3/4"	SCI	Stainless Steel
900-811	US80P x 605	Storeroom	2-3/4"	SCI	Bright Brass

DOOR HARDWARE

STORE FRONT HARDWARE

SECURITY HARDWARE PRODUCTS

CYLINDRICAL LOCKSET

Grade 2 - US Series IC-Core



- Medium duty commercial grade 2 lockset.
- Ball design knob.
- Accepts 6 or 7 pin SFIC cores.
- U.L. listed 2-3/4" latch



PART#	MFG#	BACKSET	FUNCTION	KEYWAY	FINISH
901-452	US53-IC x 630	2-3/4"	Entry	-	Stainless Steel
901-457	US53-IC x 613	2-3/4"	Entry	-	Dark Bronze
901-451	US80-IC x 630	2-3/4"	Storeroom	-	Stainless Steel
901-459	US80-IC x 613	2-3/4"	Storeroom	-	Dark Bronze
901-453	US70-IC x 630	2-3/4"	Classroom	-	Stainless Steel

DOOR HARDWARE

LEVERSET & LOCKSET REPLACEMENT PARTS

Grade 2



PART#	MFG#	BACKSET	TYPE	FINISH
950-038	2-3/8-SL x 605	2-3/8"	Spring Latch	Bright Brass
950-039	2-3/8-SL x 630	2-3/8"	Spring Latch	Stainless Steel
950-036	2-3/4-SL x 605	2-3/4"	Spring Latch	Bright Brass
950-037	2-3/4-SL x 630	2-3/4"	Spring Latch	Stainless Steel
950-040	2-3/8-SL x 613	2-3/8"	Spring Latch	Dark Bronze
900-442	2-3/8-SL/PL x 605	2-3/8"	Privacy Latch	Bright Brass
900-444	2-3/8-SL/PL x 630	2-3/8"	Privacy Latch	Stainless Steel
900-443	2-3/8-SL/PL x 613	2-3/8"	Privacy Latch	Dark Bronze
900-445	2-3/4-SL/PL x 605	2-3/4"	Privacy Latch	Bright Brass
900-447	2-3/4-SL/PL x 630	2-3/4"	Privacy Latch	Stainless Steel
900-446	2-3/4-SL/PL x 613	2-3/4"	Privacy Latch	Dark Bronze
900-519	2-3/8-DL x 605	2-3/8"	Dead Latch	Bright Brass
900-509	2-3/8-DL x 613	2-3/8"	Dead Latch	Dark Bronze
900-518	2-3/8-DL x 630	2-3/8"	Dead Latch	Stainless Steel
900-520	2-3/4-DL x 605	2-3/4"	Dead Latch	Bright Brass
900-524	2-3/4-DL x 613	2-3/4"	Dead Latch	Dark Bronze
900-515	2-3/4-DL x 630	2-3/4"	Dead Latch	Stainless Steel
950-041	2-3/4-DL x 626	2-3/4"	Drive In	Satin Chrome
950-042	2-3/8-DL x 626	2-3/8"	Drive In	Satin Chrome

STORE FRONT HARDWARE

SECURITY HARDWARE PRODUCTS

LEVERSET & LOCKSET REPLACEMENT PARTS

Grade 1 & 2 — cont'd

DOOR HARDWARE



PART# 900-531



PART# 914-194

PART#	MFG#	DESCRIPTION
914-179	57MM	5" Backset Extension for G2
914-194	57MM	5" Backset Extension for G1
900-531	Clip Tool	Clip Removal Tool Lockset
974-515	006-FC85004-I	Screw Pack for G2 Lever
915-081	006-EV22903-I	Tailpiece for G2 IC Lever
974-516	6-Way Adjustable	Tailpiece for G2 IC Knob
974-514	006-FC85004	Screw Pack for G1 Lever

TUBULAR LOCKSET

Grade 3 - US 100 Series



- Medium duty residential tubular grade 3 lockset.
- Adjustable door thickness.
- Interior push button.
- Tulip Knob Design.
- WR3 keyway.
- Keyed Different.
- Adjustable backset U.L. listed latch square corner.
- Square corner full lip strike.
- Designed to install with ease.

STORE FRONT HARDWARE

PART#	MFG#	BACKSET	FUNCTION	KEYWAY	FINISH
900-487	US110 x 605	Adjustable	Passage	-	Bright Brass
900-488	US110 x 609	Adjustable	Passage	-	Antique Brass
900-489	US130 x 605	Adjustable	Privacy	-	Bright Brass
900-490	US130 x 609	Adjustable	Privacy	-	Antique Brass
900-491	US151 x 605-KD	Adjustable	Entry	WR3	Bright Brass
900-492	US151 x 609-KD	Adjustable	Entry	WR3	Antique Brass

TUBULAR LOCKSET REPLACEMENT PARTS

Grade 3



PART#	MFG#	BACKSET	TYPE	FACEPLATE	FINISH
900-523	UCG3-ADJ-SL x 605	Adjustable	Spring Latch	Square	Bright Brass
900-522	UCG3-ADJ-DL x 605	Adjustable	Dead Latch	Square	Bright Brass

SECURITY HARDWARE PRODUCTS

CYLINDRICAL LOCKSET

Grade 3 - K300 Series



- Medium duty cylindrical grade 3 lockset.
- Adjustable door thickness.
- Interior push button.
- Orbit vDesign.
- SC1, WR3 keyway (Orbit)
- Keyed Different.
- Adjustable backset U.L. listed latch square corner (Orbit)
- Square corner full lip strike (Orbit)
- Designed to install with ease.

PART#	MFG#	BACKSET	FUNCTION	KEYWAY	FINISH
950-360	K310S x 605 x Orb	Adjustable	Passage	-	Bright Brass
950-365	K310S x 609 x Orb	Adjustable	Passage	-	Antique Brass
950-370	K310S x 630 x Orb	Adjustable	Passage	-	Stainless Steel
950-375	K310S x 619 x Orb	Adjustable	Passage	-	Satin Nickel
950-340	K340S x 605 x Orb	Adjustable	Privacy	-	Bright Brass
950-345	K340S x 609 x Orb	Adjustable	Privacy	-	Antique Brass
950-350	K340S x 630 x Orb	Adjustable	Privacy	-	Stainless Steel
950-355	K340S x 619 x Orb	Adjustable	Privacy	-	Satin Nickel
950-300	K350D x 605 x Orb	Adjustable	Entry	WR3-KD	Bright Brass
950-305	K350D x 609 x Orb	Adjustable	Entry	WR3-KD	Antique Brass
950-310	K350D x 630 x Orb	Adjustable	Entry	WR3-KD	Stainless Steel
950-315	K350D x 619 x Orb	Adjustable	Entry	WR3-KD	Satin Nickel
950-405	K350D x 605 x Orb	Adjustable	Entry	SC1-KD	Bright Brass
950-410	K350D x 609 x Orb	Adjustable	Entry	SC1-KD	Antique Brass
950-415	K350D x 630 x Orb	Adjustable	Entry	SC1-KD	Stainless Steel
950-417	K350D x 619 x Orb	Adjustable	Entry	SC1-KD	Satin Nickel
950-320	K380D x 605 x Orb	Adjustable	Storeroom	WR3-KD	Bright Brass
950-322	K380D x 609 x Orb	Adjustable	Storeroom	WR3-KD	Satin Nickel
950-330	K380D x 630 x Orb	Adjustable	Storeroom	WR3-KD	Stainless Steel
950-420	K380D x 605 x Orb	Adjustable	Storeroom	SC1-KD	Bright Brass
950-425	K380D x 630 x Orb	Adjustable	Storeroom	SC1-KD	Stainless Steel

DOOR HARDWARE

STORE FRONT HARDWARE

SECURITY HARDWARE PRODUCTS

CYLINDRICAL LOCKSET REPLACEMENT PARTS

Grade 3



PART#	MFG#	BACKSET	TYPE	FACEPLATE	FINISH
900-530	G3-ADJ-DL x 605	Adjustable	Dead Latch	Square	Bright Brass
900-502	G3-ADJ-DL x 609	Adjustable	Dead Latch	Square	Antique Brass
900-590	G3-ADJ-DL x 630	Adjustable	Dead Latch	Square	Stainless Steel

DOOR HARDWARE

DEADBOLT REMOVEABLE CYLINDER

Grade 2 - D120 & D220 Series



- Heavy duty commercial Deadbolt.
- Removable SC-I keyway cylinder.
- Fixed 1" deadbolt latch. 2-3/8" or 2-3/4".
- Bolt Diameter 7/8".

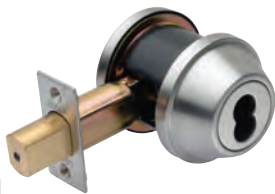


STORE FRONT HARDWARE

PART#	MFG#	BACKSET	FUNCTION	KEYWAY	FINISH
950-196	D120 x 605	2-3/4"	Single Cylinder	SC I	Bright Brass
950-197	D120 x 630	2-3/4"	Single Cylinder	SC I	Stainless Steel
900-619	D120 x 613	2-3/4"	Single Cylinder	SC I	Dark Bronze
950-216	D120 x 605	2-3/8"	Single Cylinder	SC I	Bright Brass
950-217	D120 x 630	2-3/8"	Single Cylinder	SC I	Stainless Steel
900-571	D120 x 613	2-3/8"	Single Cylinder	SC I	Dark Bronze
950-198	D220 x 605	2-3/4"	Double Cylinder	SC I	Bright Brass
950-199	D220 x 630	2-3/4"	Double Cylinder	SC I	Stainless Steel
900-624	D220 x 613	2-3/4"	Double Cylinder	SC I	Dark Bronze
950-218	D220 x 605	2-3/8"	Double Cylinder	SC I	Bright Brass
950-219	D220 x 630	2-3/8"	Double Cylinder	SC I	Stainless Steel
900-578	D220 x 613	2-3/8"	Double Cylinder	SC I	Dark Bronze

SECURITY HARDWARE PRODUCTS

DEADBOLT Grade 2 - D120 & D220 Series IC-Core



IC-Core Cylinder not included

- Heavy duty commercial grade 2 deadbolt.
- Accepts 6 or 7 pin SFIC cores.
- Fixed 1" deadbolt latch. 2-3/8" or 2-3/4".
- Latch is 2-3/8", 2-3/4".
- Bolt Diameter 7/8".



PART#	MFG#	BACKSET	FUNCTION	KEYWAY	FINISH
950-200	D120-IC x 630	2-3/4"	Single Cylinder	-	Stainless Steel
950-201	D120-IC x 613	2-3/4"	Single Cylinder	-	Dark Bronze

DOOR HARDWARE

DEADBOLT REPLACEMENT LATCHES Grade 2



PART#	MFG#	BACKSET	TYPE	FACEPLATE	FINISH
900-434	2-3/8" Fixed	2-3/8"	Deadbolt		Bright Brass
900-435	2-3/4" Fixed	2-3/4"	Deadbolt		Bright Brass
900-436	2-3/8" Fixed	2-3/8"	Deadbolt		Antique Brass
900-438	2-3/8" Fixed	2-3/8"	Deadbolt		Dark Bronze
900-439	2-3/4" Fixed	2-3/4"	Deadbolt		Dark Bronze
900-440	2-3/8" Fixed	2-3/8"	Deadbolt		Stainless Steel
900-441	2-3/4" Fixed	2-3/4"	Deadbolt		Stainless Steel

STORE FRONT HARDWARE

SECURITY HARDWARE PRODUCTS

DEADBOLT REMOVEABLE CYLINDER

Grade 2 - D130 & D230 Series



- Heavy duty commercial Deadbolt.
- Removable SC-1 or WR5 or KWI keyway cylinder.
- New 6-way adjustable 1" deadbolt latch. 2-3/8"- 2-3/4", Drive-In - Standard, Radius - Square.
- Bolt Diameter 5/8".



DOOR HARDWARE

STORE FRONT HARDWARE

SECURITY HARDWARE PRODUCTS

PART#	MFG#	BACKSET	FUNCTION	KEYWAY	FINISH
900-692	D130 x 605 - KD Single	6-Way Adjustable	Single Cylinder	SC1	Bright Brass
900-693	D130 x 630 - KD Single	6-Way Adjustable	Single Cylinder	SC1	Stainless Steel
900-694	D130 x 613 - KD Single	6-Way Adjustable	Single Cylinder	SC1	Dark Bronze
974-500	D130 x 609 - KD Single	6-Way Adjustable	Single Cylinder	SC1	Antique Brass
974-501	D130 x 619 - KD Single	6-Way Adjustable	Single Cylinder	SC1	Satin Nickel
974-542	D130 x 626 - KD Single	6-Way Adjustable	Single Cylinder	SC1	Satin Chrome
974-490	D130 x 605 - KD Single	6-Way Adjustable	Single Cylinder	WR5	Bright Brass
974-493	D130 x 630 - KD Single	6-Way Adjustable	Single Cylinder	WR5	Stainless Steel
974-491	D130 x 609 - KD Single	6-Way Adjustable	Single Cylinder	WR5	Antique Brass
974-492	D130 x 619 - KD Single	6-Way Adjustable	Single Cylinder	WR5	Satin Nickel
974-540	D130 x 605 - KD Single	6-Way Adjustable	Single Cylinder	KWI	Bright Brass
974-541	D130 x 630 - KD Single	6-Way Adjustable	Single Cylinder	KWI	Stainless Steel
900-754	D230 x 605 - KD Double	6-Way Adjustable	Double Cylinder	SC1	Bright Brass
900-755	D230 x 630 - KD Double	6-Way Adjustable	Double Cylinder	SC1	Stainless Steel
900-756	D230 x 613 - KD Double	6-Way Adjustable	Double Cylinder	SC1	Dark Bronze
974-502	D230 x 609 - KD Double	6-Way Adjustable	Double Cylinder	SC1	Antique Brass
974-503	D230 x 619 - KD Double	6-Way Adjustable	Double Cylinder	SC1	Satin Nickel
974-757	D230 x 626 - KD Double	6-Way Adjustable	Double Cylinder	SC1	Satin Chrome
974-494	D230 x 605 - KD Double	6-Way Adjustable	Double Cylinder	WR5	Bright Brass
974-497	D230 x 630 - KD Double	6-Way Adjustable	Double Cylinder	WR5	Stainless Steel
974-495	D230 x 609 - KD Double	6-Way Adjustable	Double Cylinder	WR5	Antique Brass
974-496	D230 x 619 - KD Double	6-Way Adjustable	Double Cylinder	WR5	Satin Nickel

DEADBOLT Grade 2 - D130 & D230 Series IC-Core



IC-Core Cylinder not included

- Heavy duty commercial grade 2 deadbolt.
- Accepts 6 or 7 pin SFIC cores.
- 6-way adjustable 1" deadbolt latch.
- Latch is 2-3/8", 2-3/4", Radius, Square, Standard or Drive-In.
- Bolt Diameter 5/8".



PART#	MFG#	BACKSET	FUNCTION	KEYWAY	FINISH
960-300	D130-IC x 630 x Single	6-Way Adjustable	Single Cylinder	-	Stainless Steel
960-301	D130-IC x 613 x Single	6-Way Adjustable	Single Cylinder	-	Dark Bronze
960-305	D230-IC x 630 x Double	6-Way Adjustable	Double Cylinder	-	Stainless Steel
960-306	D230-IC x 613 x Double	6-Way Adjustable	Double Cylinder	-	Dark Bronze

DEADBOLT REPLACEMENT LATCHES Grade 2



PART#	MFG#	BACKSET	TYPE	FACEPLATE	FINISH
974-510	9096 x 605	6-Way Adjust	Deadbolt	Multiple	Bright Brass
974-511	9096 x 630	6-Way Adjust	Deadbolt	Multiple	Stainless Steel
974-512	9096 x 609	6-Way Adjust	Deadbolt	Multiple	Antique Brass
974-513	9096 x 613	6-Way Adjust	Deadbolt	Multiple	Dark Bronze

DEADBOLT REMOVEABLE CYLINDER Grade 3 - D125 & D225 Series



- Medium duty single and double cylinder deadbolt lockset.
- 1-3/8" to 1-3/4" door thickness.
- SCI keyway.
- Keyed Different.
- 4-Way Adjustable 2-3/8", 2-3/4" backset with removable face for drive-in or standard.
- Includes a 1" throw dead-bolt latch.
- Square corner deadbolt strike.
- Removable cylinder.
- Accepts most manufacturers aftermarket cylinders.
- Designed to install with ease.

PART#	MFG#	BACKSET	FUNCTION	KEYWAY	FINISH
950-100	D125 x 605-KD	4-Way Adjust	Single Cylinder	SCI	Bright Brass
950-105	D125 x 609-KD	4-Way Adjust	Single Cylinder	SCI	Antique Brass
950-110	D125 x 630-KD	4-Way Adjust	Single Cylinder	SCI	Stainless Steel
950-120	D225 x 605-KD	4-Way Adjust	Double Cylinder	SCI	Bright Brass
950-125	D225 x 609-KD	4-Way Adjust	Double Cylinder	SCI	Antique Brass
950-130	D225 x 630-KD	4-Way Adjust	Double Cylinder	SCI	Stainless Steel

DEADBOLT Grade 3 - D108 & D208 Series



- Medium duty single and double cylinder deadbolt lockset.
- 1-3/8" to 1-3/4" door thickness.
- WR3, SCI, or KWI keyway.
- Keyed Different.
- 4-Way Adjustable 2-3/8", 2-3/4" backset with removable face for drive-in or standard.
- Includes a 1" throw dead-bolt latch.
- Square corner latch plate and deadbolt strike.
- Designed to install with ease.

PART#	MFG#	BACKSET	FUNCTION	KEYWAY	FINISH
900-480	D108 x 605-KD	4-Way Adjust	Single Cylinder	WR3	Bright Brass
900-481	D108 x 609-KD	4-Way Adjust	Single Cylinder	WR3	Antique Brass
900-508	D108 x 630-KD	4-Way Adjust	Single Cylinder	WR3	Stainless Steel
900-450	D108 x 605-KD	4-Way Adjust	Single Cylinder	KWI	Bright Brass
900-452	D108 x 630-KD	4-Way Adjust	Single Cylinder	KWI	Stainless Steel
900-455	D108 x 619-KD	4-Way Adjust	Single Cylinder	KWI	Satin Nickel
900-456	D108 x 613-KD	4-Way Adjust	Single Cylinder	KWI	Dark Bronze
900-460	D108 x 605-KD	4-Way Adjust	Single Cylinder	SCI	Bright Brass
900-462	D108 x 630-KD	4-Way Adjust	Single Cylinder	SCI	Stainless Steel
900-425	D108 x 619-KD	4-Way Adjust	Single Cylinder	SCI	Satin Nickel
900-426	D108 x 613-KD	4-Way Adjust	Single Cylinder	SCI	Dark Bronze
974-504	D108 x 619-KD	4-Way Adjust	Single Cylinder	WR3	Satin Nickel
974-505	D108 x 613-KD	4-Way Adjust	Single Cylinder	WR3	Dark Bronze
900-484	D208 x 605-KD	4-Way Adjust	Double Cylinder	WR3	Bright Brass
900-513	D208 x 609-KD	4-Way Adjust	Double Cylinder	WR3	Antique Brass
900-516	D208 x 630-KD	4-Way Adjust	Double Cylinder	WR3	Stainless Steel
974-506	D208 x 619-KD	4-Way Adjust	Double Cylinder	WR3	Satin Nickel
900-451	D208 x 605-KD	4-Way Adjust	Double Cylinder	KWI	Bright Brass

DEADBOLT REPLACEMENT LATCH Grade 3



PART#	MFG#	BACKSET	TYPE	FACEPLATE	FINISH
950-400	UCG3DB4W x 605	4-Way Adjust	Deadbolt	Square	Bright Brass

DOOR HARDWARE

STORE FRONT HARDWARE

SECURITY HARDWARE PRODUCTS

DEADBOLT REPLACEMENT PARTS

Grade 2 & 3



PART# 914-180



PART# 914-181



PART# 914-184



PART# 914-182

PART#	MFG#	DESCRIPTION
914-185	SCDT-G2/3	D125, D130 Single Cylinder Tailpiece
914-184	DCDT-G2/3	D225, D230 Double Cylinder Tailpiece (Pair)
914-180	SCDT-G3	D108 Single Cylinder Tailpiece
914-181	DCDT-G3	D208 Double Cylinder Tailpiece (Pair)
914-182	DSCDW	Washer for Single Cylinder Tailpieces

DEADBOLT SCREW PACK

Grade 2



PART#	MFG#	DESCRIPTION
914-190	SP-D120 x 630	Screw Pack Single Stainless
914-191	SP-D120 x 605	Screw Pack Single Brass
914-192	SP-D220 x 630	Screw Pack Double Stainless
914-193	SP-D220 x 605	Screw Pack Double Brass

DOOR HARDWARE

STORE FRONT HARDWARE

SECURITY HARDWARE PRODUCTS

RIM MOUNT PANIC EXIT DEVICE

UC-PB Series

DOOR HARDWARE



- Low Profile Rim mount exit device with touch bar.
- Non-Handed.
- Manufactured from wrought steel and powder coated in two durable commercial finishes.
- Stainless Steel, 3/4" throw latchbolt.
- Stainless Steel, 5/8" dead latch.
- 1/4 turn hex key dogging device.
- U.L. listed.
- Meets ANSI 156.3-2001 Grade I standards.
- Covers a standard BHMA 161 cutout.



PART#	MFG#	LENGTH	FINISH
940-200	UC-PB3602 x Alum	36"	Aluminum
940-205	UC-PB3602 x Duro	36"	Dark Bronze
940-210	UC-PB4202 x Alum	42"	Aluminum
940-215	UC-PB4202 x Duro	42"	Dark Bronze

STORE FRONT HARDWARE

PANIC EXIT DEVICE TRIM

UC Series



PART# 940-220



PART# 940-226



PART# 940-230

- Keyed trim is dual function (Passage & Rigid)
- UC-DP001 Pull: 11.5" H x 3" W.
- Pulls do not come with rim cylinder.

SECURITY HARDWARE PRODUCTS

PART#	MFG#	FINISH
940-226	UC-KB005-SC1x630	Stainless Steel
940-224	UC-KB005-SC1x613	Dark Bronze
940-230	UC-LV006-SC1x630	Stainless Steel
940-225	UC-LV006-SC1x613	Dark Bronze
940-220	UC-DP001 x 630	Stainless Steel
940-233	USB x 6	Sex Bolt (6 Pack)

GRADE I EXIT DEVICE

UC-2100 Series



- Heavy Duty Grade I device designed for high traffic commercial applications.
- Non-Handed.
- Stainless Steel, 3/4" throw latchbolt.
- 1/4 turn hex key dogging device.
- U.L. listed.
- Meets ANSI I56.3-2001 Grade I standards.
- Covers a standard BHMA I61 cutout.



PART#	MFG#	LENGTH	FINISH
940-090	UC-2136 x 630	36"	Stainless Steel
940-095	UC-2142 x 630	42"	Stainless Steel

DOOR HARDWARE

STORE FRONT HARDWARE

SECURITY HARDWARE PRODUCTS

PANIC EXIT DEVICE TRIM

UC-2100 Series



PART# 940-120



PART# 940-125

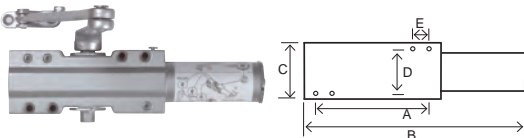


PART# 940-130

- Heavy Duty investment cast steel trim designed to work with UsCAN UC-2100 Series Rim mount exit devices.
- UC-203R Nightlatch Pull Handle
- UC-308R *Key Locks or Unlocks bolt.
- UC309R Night Latch * Key retracts bolt.
- Pulls do not come with rim cylinder.

PART#	MFG#	FINISH
940-120	UC-203R x 630	Stainless Steel
940-125	UC-308R x 626	Satin Chrome
940-130	UC-309R x 626	Satin Chrome
940-140	UC-1024SNB x 626	Sex Bolts

DOOR CLOSER Grade 1 - 3000 Series



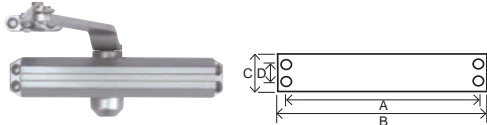
A: 5" B: 11-1/4" C: 2-3/4" D: 2-1/4" E: 1"

- Adjustable power cast aluminum alloy body closer that is designed for high traffic commercial applications.
- UL A156.4 Grade I.
- 1 - 6 adjustable power.
- Tri-pack for regular, parallel arm and top jamb installation.
- Adjustable sweep and latching speed valves.
- Non-Handed installation.
- Door Width Maximum: Interior 48", Exterior 60".



PART#	MFG#	FINISH
900-119	UC3000BCBFCV-AL	Aluminum
900-120	UC3000BCBFCV-DU	Dark Bronze

DOOR CLOSER Grade 1 - 2000 Series



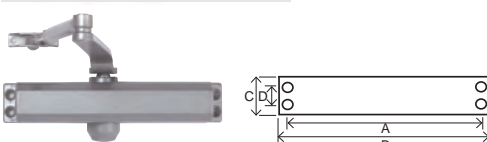
A: 9-1/16" B: 9-5/8" C: 1-13/16" D: 3/4"

- Adjustable power cast aluminum alloy body closer that is designed for commercial applications.
- UL A156.4 Grade I.
- 1 - 4 adjustable power.
- Tri-pack for regular, parallel arm and top jamb installation.
- Adjustable sweep and latching speed valves.
- Delayed action control valve.
- Non-Handed installation.
- Door Width Maximum: Interior 48", Exterior 52".



PART#	MFG#	FINISH
900-117	UC2000BCBF-AL	Aluminum
900-118	UC2000BCBF-DU	Dark Bronze

DOOR CLOSER Grade 3 - 1000 Series



A: 9-1/16" B: 9-5/8" C: 1-13/16" D: 3/4"

- Precision cast aluminum alloy body closer that is designed for light traffic commercial or residential applications.
- Tri-pack for regular, parallel arm and top jamb installation.
- Adjustable sweep, latching speed and back check valves.
- Sized #4 with universal retrofit hole spacing.
- Adjustable power 2-5.
- Non-Handed installation.
- Door Width Maximum: Interior 44", Exterior 48".



PART#	MFG#	FINISH
900-115	UC1000BC-AL	Aluminum
900-116	UC1000BC-DU	Dark Bronze

NARROW STILE ALUMINUM DOOR DEADLATCH LOCK UC-DL4510 Series



Face plate not included

- Heavy-duty deadlatch function lock for narrow stile aluminum door frames and doors.
- Field reversible handing.
- Available 31/32" and 1-1/8" backset.
- Reverse turn of the key while the bolt is held retracted retains the bolt. This enables a passage application.

PART#	MFG#	HANDING	BACKSET
963-120	UC-DL45101	LH	31/32"
963-121	UC-DL45102	RH	31/32"
963-122	UC-DL45103	LH	1-1/8"
963-123	UC-DL45104	RH	1-1/8"
PART#	MFG#	TYPE	FINISH
963-190	UC-DL4511-AL	Flat Face Plate	Aluminum
963-191	UC-DL4511-DU	Flat Face Plate	Dark Bronze
963-195	UC-DL4512-AL	Radius Face Plate	Aluminum
963-196	UC-DL4512-DU	Radius Face Plate	Dark Bronze

NARROW STILE ALUMINUM DOOR DEADBOLT LOCK UC-DB2850 Series



Face plate not included

- Massive laminated stainless steel swinging deadbolt.
- Universal handing.
- Available 7/8", 31/32" and 1-1/8" backset.

PART#	MFG#	HANDING	BACKSET
963-100	UC-DB28501	Universal	7/8"
963-101	UC-DB28502	Universal	31/32"
963-102	UC-DB28503	Universal	1-1/8"
PART#	MFG#	TYPE	FINISH
963-140	UC-DB1851-AL	Flat Face Plate	Aluminum
963-141	UC-DB1851-DU	Flat Face Plate	Dark Bronze
963-145	UC-DB1852-AL	Radius	Aluminum
963-146	UC-DB1852-DU	Radius	Dark Bronze
963-150	UC-DB1854-AL	LH Beveled	Aluminum
963-151	UC-DB1854-DU	LH Beveled	Dark Bronze
963-155	UC-DB1855-AL	RH Beveled	Aluminum
963-156	UC-DB1855-DU	RH Beveled	Dark Bronze

NARROW STILE ALUMINUM DOOR HOOK BOLT LOCK UC-HB3820 Series



Face plate not included

- Massive laminated stainless steel swinging hook bolt.
- Universal handing.
- Available 31/32" and 1-1/8" backset.

PART#	MFG#	HANDING	BACKSET
963-111	UC-HB38202	Universal	31/32"
963-112	UC-HB38203	Universal	1-1/8"
PART#	MFG#	TYPE	FINISH
963-160	UC-HB1821-AL	Flat Face Plate	Aluminum
963-161	UC-HB1821-DU	Flat Face Plate	Dark Bronze
963-165	UC-HB1822-AL	Radius	Aluminum
963-166	UC-HB1822-DU	Radius	Dark Bronze

DOOR HARDWARE

STORE FRONT HARDWARE

SECURITY HARDWARE PRODUCTS

NARROW STILE ALUMINUM DOOR DEADLATCH PADDLE UC-P5500 Series

DOOR HARDWARE



- Extruded aluminum paddle complete with mounting hardware and cam plug.
- Designed to operate with most narrow stile dead latches.
- Field reversible LH/RH, Push/Pull.

PART#	MFG#	HANDING	FINISH
963-250	UC-P5591-AL	LH	Satin Anodized
963-251	UC-P5592-AL	RH	Satin Anodized
963-255	UC-P5593-DU	LH	Dark Bronze
963-256	UC-P5594-DU	RH	Dark Bronze

NARROW STILE ALUMINUM DOOR DEADLATCH HANDLE UC-P5500 Series

STORE FRONT HARDWARE



- Cast aluminum lever complete with mounting hardware and cam plug.
- Designed to operate with most narrow stile dead latches.
- Heavy-duty spring mechanism prevents lever sag.
- Durable powder coated finish.
- Field reversible LH or RH.

PART#	MFG#	HANDING	FINISH
963-260	UC-L5561-AL	LH	Aluminum
963-261	UC-L5562-AL	RH	Aluminum
963-265	UC-L5563-DU	LH	Dark Bronze
963-266	UC-L5564-DU	RH	Dark Bronze

NARROW STILE ALUMINUM DOOR PARTS UC Series

SECURITY HARDWARE PRODUCTS



PART# 963-280

PART# 963-270

- Cast aluminum cam plug for use with paddle and lever handles.
- Hardened Steel Free Spinning Mortise Cylinder Guard.

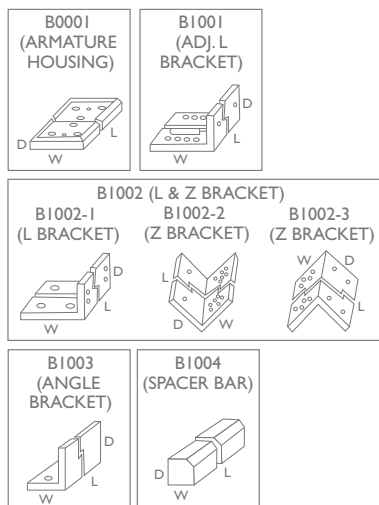
PART#	MFG#	DESCRIPTION	FINISH
963-270	UC-CP5560	Cam Plug	-
963-280	UC-GC5000-AL	Cylinder Guard	Aluminum
963-281	UC-GC5000-DU	Cylinder Guard	Dark Bronze
963-124	SC-451D	Strike for DL45000	

ELETRO MAGNETIC LOCK

UC-ML Series



- 1200 lbs. of holding force.
- Field selectable 12 or 24V-DC.
- Current draw 500mA 12V, 250mA 24V
- Surface Mounted



PART#	MFG#	FINISH
921-000	UC-ML01 x US28	Satin Aluminum
921-045	UC-ML01 x US10B	Dark Bronze
921-005	UC-AH-B0001	Armature Housing
921-010	UC-ADJB-B1001	Adjustable Bracket
921-015	UC-ZB-B1002-2	Z Bracket
921-020	UC-ANGB-B1003	Angle Bracket
921-025	UC-SB-B1004	Hardware Bracket
921-035	UC-HK	Hardware Package
921-040	UC-AP	Armature Plate
921-030	UC-EBI	PC Board

SOLID BRASS DOOR VIEWERS

UC Series



- Solid brass body with glass lens.
- Available 160 and 190 degree.

PART#	MFG#	DESCRIPTION	FINISH
909-751	UC10-VI-151	160 Degree	Bright Brass
909-752	UC10-VI-351	190 Degree	Bright Brass

STAINLESS STEEL ROUND PADLOCK R70 Series

DOOR HARDWARE



- 2-3/4" Diameter stainless steel interior and exterior body.
- Solid brass 4 pin cylinder with brass pins.
- Case hardened 1 3/32" diameter shackle.

PART#	MFG#	DESCRIPTION
904-789	R70-KD	Stainless Steel Round Padlock
904-788	R70-KA1	Stainless Steel Round Padlock
904-790	R70-KA2	Stainless Steel Round Padlock
904-791	R70-KA3	Stainless Steel Round Padlock
233-875	KB-R70	Key Blank

SOLID BRASS PADLOCK B Series

STORE FRONT HARDWARE



PART# 904-760

- Solid brass construction body.
- Solid brass cylinder and pins.
- Double locking chrome plated hardened steel shackle (excluding 20mm)
- 20/30mm are keyed 4 pin.
- 40/50mm are keyed 5 pin.

PART#	MFG#	BODY WIDTH	SHACKLE DIA. X LTH.
904-760	B30-KD	1-1/8"	3/16" x 5/8"
904-762	B30-KA1	1-1/8"	3/16" x 5/8"
904-764	B30-KA2	1-1/8"	3/16" x 5/8"
904-766	B30-KA3	1-1/8"	3/16" x 5/8"
904-770	B40-KD	1-1/2"	1/4" x 1"
904-772	B40-KA1	1-1/2"	1/4" x 1"
904-774	B40-KA2	1-1/2"	1/4" x 1"
904-776	B40-KA3	1-1/2"	1/4" x 1"



PART# 904-770

PART#	MFG#	DESCRIPTION
233-870	KB2000	20mm Key Blank
233-872	KB3040	30/40mm Key Blank
233-874	KB5060	50mm Key Blank

SECURITY HARDWARE PRODUCTS

LAMINATED STEEL PADLOCK L Series

- Galvanized laminated steel plated body.
- Solid brass cylinder and pins.
- Double locking chrome plated hardened steel shackle.
- 30mm is keyed 4 pin with M2 keyway.
- 40/45/50mm are keyed 4 pin with M1 keyway.



PART# 904-650



PART# 904-660



PART# 904-680



PART# 904-690

PART#	MFG#	BODY WIDTH	SHACKLE DIA. X LTH.
904-650	L30-KD	1-1/8"	3/16" x 9/16"
904-651	L30-KA1	1-1/8"	3/16" x 9/16"
904-652	L30-KA2	1-1/8"	3/16" x 9/16"
904-653	L30-KA3	1-1/8"	3/16" x 9/16"
904-660	L40-KD	1-1/2"	9/32" x 3/4"
904-664	L40-KA1	1-1/2"	9/32" x 3/4"
904-666	L40-KA2	1-1/2"	9/32" x 3/4"
904-667	L40-KA3	1-1/2"	9/32" x 3/4"
904-668	L40-KA4	1-1/2"	9/32" x 3/4"
904-669	L40-KA5	1-1/2"	9/32" x 3/4"
904-680	L45-KD	1-3/4"	5/16" x 15/16"
904-685	L45-KA1	1-3/4"	5/16" x 15/16"
904-686	L45-KA2	1-3/4"	5/16" x 15/16"
904-687	L45-KA3	1-3/4"	5/16" x 15/16"
904-690	L50-KD	2"	3/8" x 1"
904-695	L50-KA1	2"	3/8" x 1"
904-696	L50-KA2	2"	3/8" x 1"
904-697	L50-KA3	2"	3/8" x 1"

DOOR HARDWARE

STORE FRONT HARDWARE

SECURITY HARDWARE PRODUCTS

USCAN[®]

Total Security[®]



Hardware Catalog



Security Distributors Inc.
8901 Chancellor Row
Dallas, Texas 75247-5363



Doyle Security Products
2211 West River Road North
Minneapolis MN 55411
Local: 612-521-6226
Toll Free: 1-800-333-6953
Fax: 612-521-0166
E-Mail: sales@doylesecurity.com
Website: doylesecurity.com



KDL Hardware Supply, Inc.
850 Poplar Place S.
Seattle, WA 98124
Local: 206-682-7383
Toll Free: 1-800-926-7716
Fax: 1-800-524-9305
E-Mail: admin@kdlink.com
Website: www.kdlhardware.com



Fried Brothers, Inc.
467 North 7th Street
Philadelphia, PA 19123
Local: 215-627-3205
Toll Free: 1-800-523-2924
Fax: 1-800-541-3489
E-Mail: fbisecurity@fbisecurity.com
Website: www.fbisecurity.com



Hans Johnsen Company
8901 Chancellor Row
Dallas, Texas 75247-5363
Local: 214-879-1550
Toll Free: 1-888-879-1500
Fax: 1-800-967-4250
E-Mail: lock@hjc.com
Website: www.hjc.com



Robert Skeels & Company
1910 E. Dominguez Street
Carson, CA 90810
Local: 310-639-7240
Toll Free: 1-800-734-4539
Fax: 310-639-7569
E-Mail: sales@skeels.com
Website: www.skeels.com



Maziuk Wholesale Distributors
1251 West Genesee Street
Syracuse, New York 13204
Local: 315-474-3959
Toll Free: 1-800-777-5945
Fax: 315-472-3111
E-Mail: main@maziuk.com
Website: www.maziuk.com